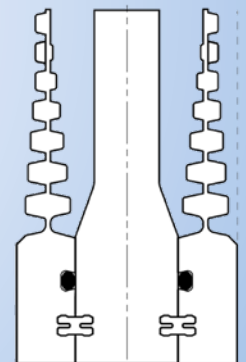
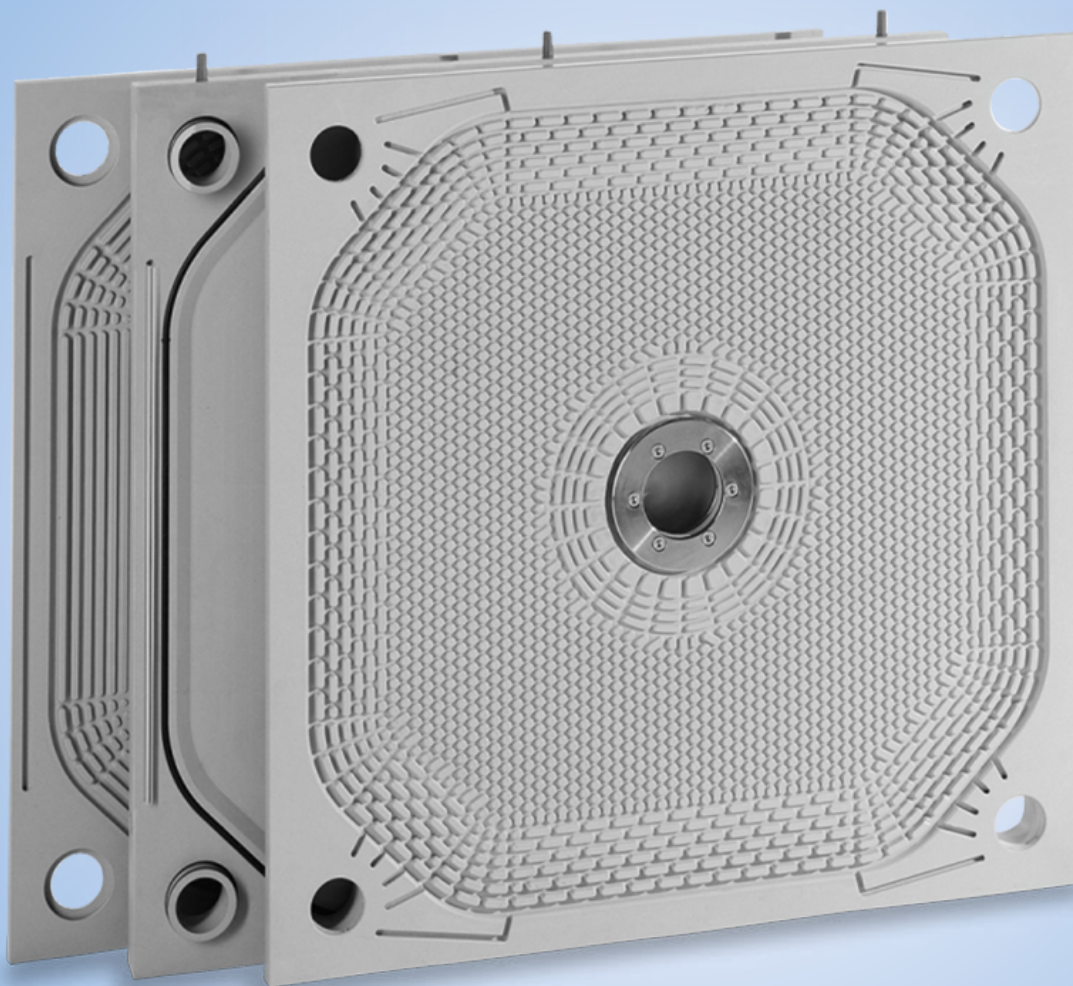


# LENSER KM RUM

MEMBRANE FILTER ELEMENT – EXCHANGEABLE MEMBRANE HALF



SQUEEZING IN AN UNFILLED OR  
EMPTY CHAMBER

SQUEEZING PRESSURE UP TO 30 BAR

## LENSER KM RUM

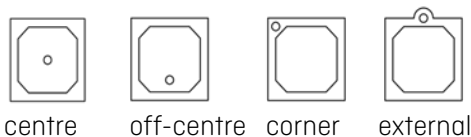
With LENSER membrane filter elements, you can significantly shorten your filtration process, increase the dry content of your cake and save enormous resources. Exchangeable membrane filter plates are an efficient and cost-effective solution for maintaining your filter press equipment. In the case of worn elements, it is not necessary to replace the complete filter plate, but only the membrane – the basic body remains intact.

With the KM RUM type, the membrane halves are fixed to the carrier plate by means of clip strips. These designs allow easy and problem-free replacement of the membrane.

### FEATURES

- +** Shorter filtration cycles
- +** Shorter washing times
- +** Higher dry solids content
- +** Membrane attachment with clip strips

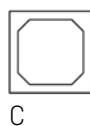
#### Feed port position



### BENEFITS

- +** Higher throughput rate
- +** Reduced water consumption
- +** Reduced air consumption during blow-drying
- +** Squeezing pressure up to 30 bar

#### Version



## TECHNICAL DATA

Size	From 470 mm and from 1.000 mm to 2.000 mm
Cake thickness	From 15 mm to 50 mm
Filtration pressure	Up to 8 bar
Squeezing pressure	Up to 30 bar
Feed port position	Centre, off-centre, corner, external
Version	C

